

St. Andrew's School



St. Andrew's School





The Viewbook

From the Headmaster	2
Campus.	4
Student Life	8
Dorm Life and Community Expectations.	8
Advising	10
Dining Together	12
Campus Stewardship	12
Health and Wellness.	12
Clubs and Activities	12
Weekend Activities	13
Traditions	13
Leadership	13
Chapel Program	14
Community Service	16
Academics	18
Examinations and Assessments	20
Reports and Grading	20
Technological Resources	20
Library	20
Arts	22
Athletics	26
Athletic Facilities.	28
College Counseling.	30
Admission and Financial Aid	32
Directions and Accommodations.	34
Map and Legend	36
Campus Map Directory.	38

Please see *The Academic Program and Faculty Profile* for details of the current school year.

St. Andrew's School is accredited by the Middle States Association of Colleges and Schools and is a member of the National Association of Independent Schools, the Educational Records Bureau, the College Board, the Secondary Schools Admission Test Board and the Association of Boarding School.

St. Andrew's School admits and offers financial aid to students of any race, gender, sexual orientation, religious affiliation and national or ethnic origin.



This viewbook and all other St. Andrew's School publications are printed on paper with recycled content. When you are finished with this publication, please pass it on or dispose of it in an environmentally responsible way.



I am pleased to introduce St. Andrew's to you as you begin the process of applying to secondary schools. I hope this viewbook and our Web site enable you to move beyond the superficial aspects of a school search towards a deeper understanding of the exciting mission and unique culture of St. Andrew's.

I have lived and worked at St. Andrew's for over 30 years as a teacher, advisor, dorm parent, coach, college counselor, dean, assistant headmaster and now headmaster. I believe in the School's mission, and I have seen the School's powerful and inspirational influence on its students and graduates. I believe in the skill, generosity and idealism of our teachers. And I love our students and deeply appreciate their embrace of the School's values.

As I introduce this School I know so well to you, I want to emphasize several essential points about our mission and philosophy:

- ❖ The enemy of great education in America is conformity and homogeneity. Therefore, our classrooms, dorms and student life programs ignite with life and creativity because of our deep commitment to diversity. From our founding in 1929 to the present day, St. Andrew's has demonstrated a unique commitment to the concept of diversity as a foundation for a great education. St. Andrew's has always sought to be a school that welcomes students from all socioeconomic groups to our campus. Today, over 45 percent of our students receive financial aid to attend St. Andrew's. Our goal of being a school "open to all, regardless of means" enables us to create a school community that reflects the diversity of our country and the world. A boarding school or college cannot thrive, flourish and grow if its faculty and student body are not diverse.
- ❖ As an Episcopal Church school, St. Andrew's is dedicated to creating a school culture that is kind, accepting, compassionate and empathetic. We work for an understanding of humanity that is inclusive and diverse. We welcome students of all religious traditions to the community and, in doing so, we seek to develop an understanding and appreciation of the many ways human beings express and create meaning in their lives.

Ultimately, we open our doors each year at St. Andrew's to teach students to take responsibility for the world. Our students appreciate the opportunities and privileges the School community affords them, but they are also excited to move beyond our campus and engage with the issues and concerns of even larger communities. We therefore encourage our students to engage in authentic community service both on campus and in the wider community.

- ❖ We view quality liberal arts education as a gift, an opportunity that will disturb us, disrupt our assumptions and challenge us to view the world in new and distinctive ways. A great education is an opportunity to learn how to think for ourselves, how to analyze, research, experiment and develop hypotheses, how to develop new approaches, perspectives and theories about our world.

Our teachers are talented, generous and brilliant. Our graduates consistently report that their St. Andrew's teachers were far more exciting, creative, committed and engaged than their college professors. The St. Andrew's teacher is indeed unlike many others, as this role requires the teacher to balance teaching with advising, coaching and mentoring our student body.

Because we find the academic mission of the School so important, we are looking for students who love learning, who seek out educational challenges and opportunities in a determined and enthusiastic way. We are proud that St. Andrew's peer culture honors scholarship, academic honesty and integrity, creativity and hard work.

- ❖ St. Andrew's believes that students in high school should have the opportunity to participate meaningfully in the arts and athletics. At a time when many schools have locked out all but the most highly talented and specialized artists and athletes from their programs, St. Andrew's has developed great opportunities for all students. We encourage our students to participate widely in athletics and the arts, as they explore the variety of activities offered at the School. Because of our small size, the spots on our teams, drama groups and choirs are open. And each year, guided by this philosophy, our artistic groups and athletic teams achieve remarkable and exciting success.
- ❖ Finally, we know that much of St. Andrew's unique energy and spirit comes from being an all-residential school. All our students and faculty live on campus, and we have chosen never to admit day students. As a result, the School's program, culture and sense of community are consistent and coherent. Through living and working together, we learn more than we ever thought possible and, in the process, friendships develop among students and between students and faculty that last a lifetime.

I hope you will visit St. Andrew's. My office is right outside the admission area and I look forward to talking to you about your hopes and aspirations for high school. If you have already decided that you want your life to make a profound difference in the world, St. Andrew's is the perfect school for you.

Daniel T. Roach, Jr.
Headmaster

Ultimately,
we open
our doors
each year at
St. Andrew's
to teach
students
to take
responsibility
for the world.

—Tad Roach
Headmaster







THE CAMPUS

What strikes many visitors most powerfully as they arrive at St. Andrew's is the sheer physical beauty of the adjacent fields, woodlands and waterways, all teeming with wildlife. As Middletown and its environs grow in population and commerce, we appreciate this sanctuary even more. Our students, staff and faculty care for the buildings, campus, pond and farmlands of the School. We also strive to create in our students a deep and enduring sense of environmental awareness and stewardship.

St. Andrew's is located in the mid-Atlantic region, a two-hour drive from Washington, D.C., one hour south of Philadelphia and fewer than three hours from New York City. Our location puts us within easy reach of the educational and cultural resources of these cities.

The countryside in which we are situated is typical of the rural Atlantic Coastal Plain, with rich farmland meandering west to the Chesapeake Bay and east to the Delaware Bay. Silver Lake and Appoquinimink Creek frame our campus to the north and east, while two-mile-long Noxontown Pond defines our southern border. Between and around these bodies of water the School owns over 2,200 acres of woods and farmland.

Deer, foxes, raccoons, hawks, owls, quail and innumerable songbirds find homes in the woods, fields and marsh that surround the campus. Noxontown Pond and Appoquinimink Creek host herons, egrets and ospreys, along with their prey—dozens of species of fish, reptiles, crustaceans and amphibians. In recent years, bald eagles have nested in towering tulip poplars on the banks of these waterways. From September through February, thousands of Canada geese, snow geese and swans descend upon the area, feeding in the cornfields and rafting at night on the ponds.

The front lawn, overlooking the T-dock and the pond, is my favorite place on campus. There is a beautiful view out over the pond, and students can always be found on the front lawn after dinner playing Frisbee or soccer, or simply socializing.

—Margaux
III Former



The campus is essential for our explorations. For one, it is beautiful and its beauty invites us to get out and experience it, to appreciate it, to gather the many questions it provides and then try to address a few, ones that are manageable. We must encourage everyone to better appreciate that which surrounds us, and, in so doing, we'll better take care of it and ourselves.

—Peter McLean
biology & environmental science teacher

Fall lingers and spring comes early in Delaware, and some consider these seasons the most beautiful times of the year here. Although winters are usually short, they can be cold. We hope for at least a week or two of ice-skating and occasional blizzards to enliven our winter days.

As a fully residential school, we live and work together at St. Andrew's, sharing and shaping the supportive atmosphere that this community enjoys. Our campus is an important part of the St. Andrew's experience. Surrounded by towering oak, beech and sycamore trees, our buildings provide great inspiration and opportunity for learning.

Founders Hall and the Cameron Gymnasium, built in stages between 1929 and 1956, are magnificent structures. Housing the dining hall, Irene duPont Library, Forbes Theater, Felix duPont, Jr. Chapel, the boys' dormitories and most of the classrooms, Founders Hall is at the heart of the campus.

Newer buildings, including O'Brien Arts Center, Amos Hall, Kip duPont Boathouse, Genereaux Aquatic Center and girls' dormitories, complement the architecture of Founders Hall and provide exceptional facilities. They also enhance our sense of the primacy of human space on St. Andrew's campus, providing pedestrian comfort and developing natural areas that bring students and faculty together. The result is a campus that is beautiful, functional and accessible.

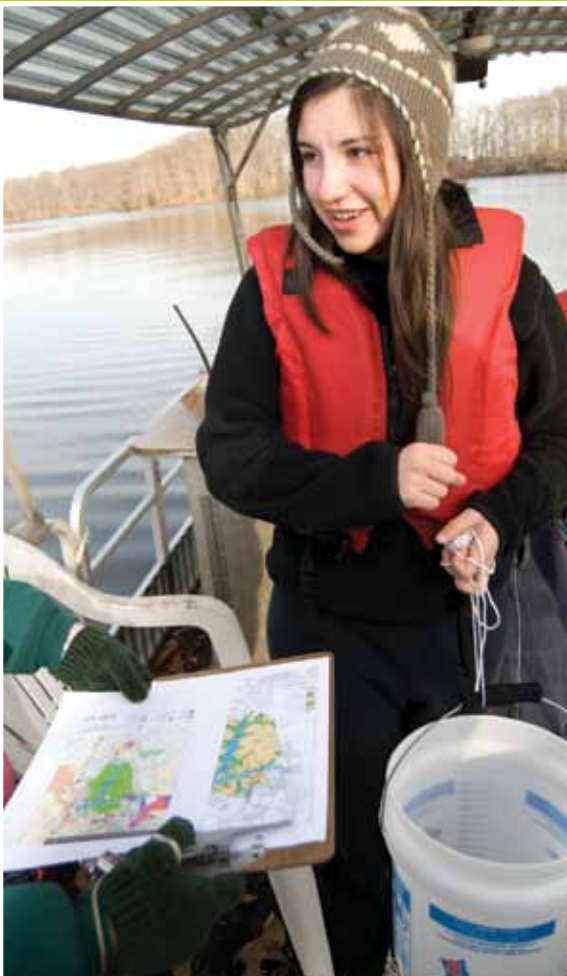
Inspired to protect our beautiful 2,200-acre campus from the development of surrounding areas, and recognizing that environmental issues are going to be the toughest challenges that today's students may face in their life as citizens, leaders and decision makers, St. Andrew's has embarked on a mission to teach, promote and actively seek greater sustainability on campus and beyond, far broader than the School's mission imagined many years ago.



St. Andrew's is committed to the sustainability and preservation of its land, water, and other natural resources. We honor this commitment by what we teach and by how we live in community and harmony with the natural world.

From our Mission Statement

LIVING SUSTAINABLY



Environmental Stewards—Dorm representatives meet weekly to discuss sustainable living, promote awareness of resources and recycling, and research new green initiatives happening around the world.

Organic Garden—Students cultivate and tend the crops in the School's organic garden providing fresh vegetables to the School's dining hall and local outreach programs.

Environmental Matters—Our periodic newsletter informs the community of the latest endeavors in campus planning and reports on the energy usage and environmental impact of campus operations.

University of Delaware Agricultural Partnership—Our faculty and students work with a University research team to evaluate land use practices with a distinct focus on the health of Noxontown Pond and our surrounding natural habitats.

100-Mile Diet and Composting—Lessons are learned in the dining hall as we are mindful of how much food we waste and how we can utilize the composting process. We are also becoming more aware of possibilities through our goal to have 50 percent of our food come from within 100 miles of our campus.



On the surface, St. Andrew's is a unique academic, spiritual, athletic, and artistic community. It is the human community, however, and its emphasis on respect, warmth, and generosity that defines us and is the strongest and most valuable asset of our School.

—Ben Kennedy '97
Faculty 2002-2009

STUDENT LIFE

The best education provides learning not only from books but also from relationships—with friends and mentors in a community. Our students come to St. Andrew's from many racial, cultural, religious and socioeconomic backgrounds. They share a great enthusiasm and love for their School, a deep commitment to scholarship and a dynamic approach to their co-curricular activities. Living and working here is exciting, challenging and enriching.

Students and visitors immediately sense what we value most in our community. Our mission encourages us to be responsible for each other and ourselves, and to be accepting and kind to one another. We celebrate and nurture the qualities of goodwill, civility, empathy and humanity.

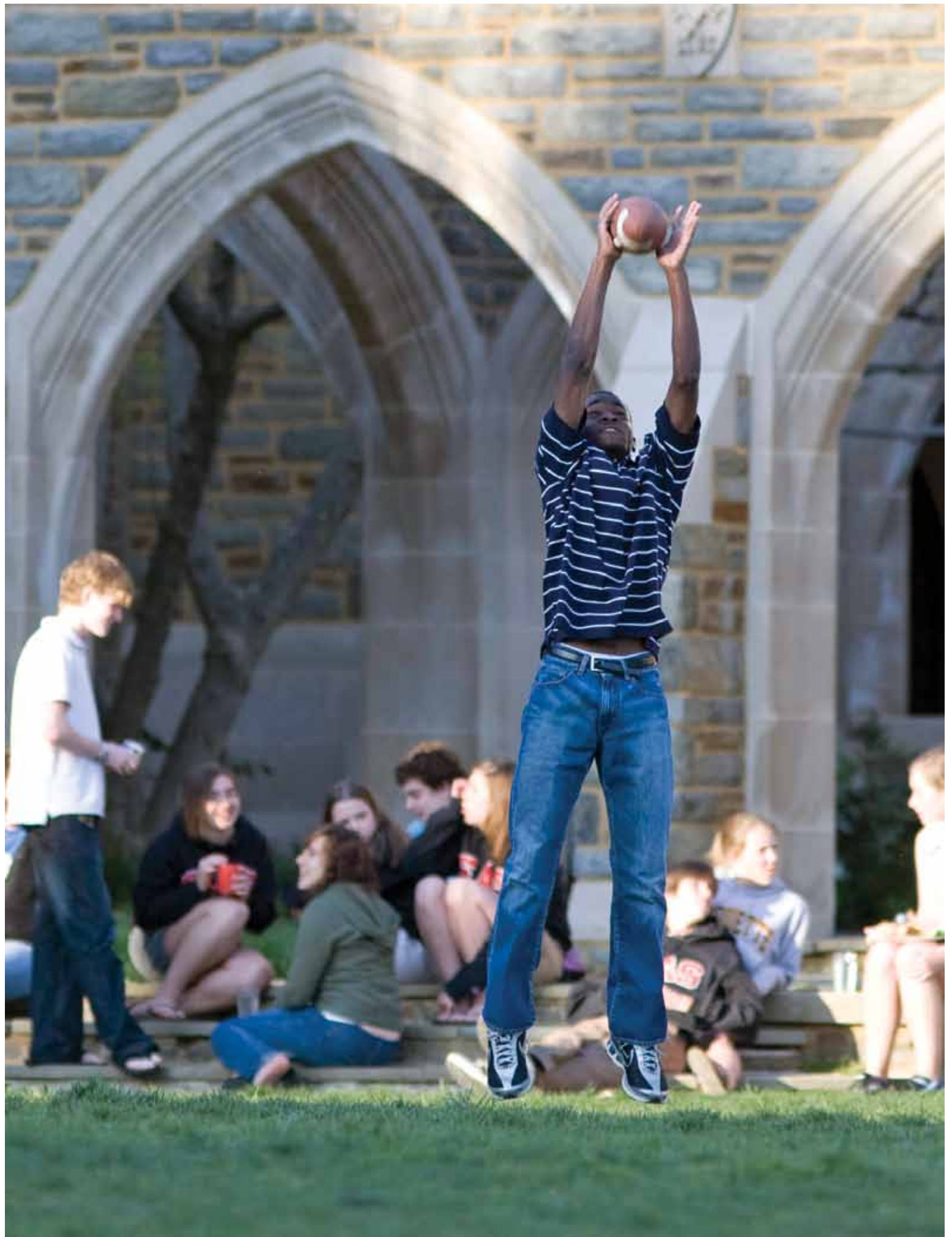
We support each other at concerts and performances in Engelhard Hall, dramatic productions in Forbes Theatre, and on the School's athletics fields. The appreciation and celebration of each other's efforts in every arena creates a genuine and dynamic School spirit.

DORM LIFE AND COMMUNITY EXPECTATIONS

Life in the dormitories is essential to the School's educational mission. St. Andrew's is increasingly unique among boarding schools for our commitment to an all-residential student body and faculty. We live and work together in a community that is genuinely close and cohesive.

St. Andrew's presents students with new academic, artistic, athletic, and personal challenges. Our residential life program is structured to support younger students in this process, providing them with faculty and student mentors to help them learn habits that will lead to success at St. Andrew's and beyond. Our students find that significant education takes place through informal conversations they have with their friends and with faculty in the dormitories, in the halls and on the fields.

Although all members of the faculty work in our dormitories, the corridor parents have overall responsibility for the students who live with them. Their homes





in the dorms are open to students and these teachers are well prepared to help students interpret the confusing and anxious moments that all teenagers occasionally experience. These men and women and their families enjoy the close contact with students that dormitory life provides. Faculty members living off dorm also open their homes to our students and they too are a key component to a student's experience at St. Andrew's.

Underformers live in dormitories by gender and by form. There are six boys' dorms and eight girls' dorms, each featuring a central common room, where students may study in groups or access the Internet, and gather for dorm meetings and celebrations. Students live primarily in double rooms, with a few single rooms and triple rooms.

VI Form students serve as residential leaders and mentors on all corridors and assist the corridor parents. Mentoring younger students is the most important responsibility of a senior at St. Andrew's. The seniors write letters of welcome to the students during the summer; help them move in on opening day, ensure a smooth adjustment during the first weeks away from home, and provide continued guidance and friendship throughout the year.

The health of any community, large or small, rests on the mutual trust, respect and understanding that exists among its members. At St. Andrew's, any form of harassment, hazing or intimidation is unacceptable. Stealing, lying or dishonesty of any kind violates the School's Honor Code and student use or possession of alcohol or illegal drugs is prohibited. The Honor and Discipline Committees, each composed of teachers

and students, review violations of honor and discipline expectations and recommend disciplinary action to the headmaster.

Our students learn most about themselves and others by living with roommates and sharing a home with students from a wide variety of backgrounds. Our dormitories are extended classrooms where students learn the importance of good communication, respect for others, friendship and trust.

ADVISING

Because our teachers are versatile and committed to every aspect of student life, they naturally serve as informal mentors to all students they come to know well through teaching, dorm parenting and coaching. In addition, St. Andrew's assigns a formal advisor to each student.

Teachers have responsibility for groups of advisees each year, usually numbering between five and eight students. The Admission Office assigns advisors for all new students. Returning students may choose their advisor each year, and many retain the same advisor throughout their career at the School.

Meeting students regularly in both formal and informal sessions, advisors work closely with their advisees by counseling them in all aspects of their life at the School. Each advisee group becomes a small family unit, often celebrating birthdays and having dinner together on and off campus. Advisors serve as the most important initial link between parents and the School, communicating through conferences, telephone calls and e-mail. St. Andrew's takes particular



Student Groups:

Cultural Exchange
Gay Straight Alliance
Sista Space
International House

Conferences:

NAIS Student Diversity
Leadership Conference
People Of Color Conference
Independent School Diversity
Seminar

Recent Speakers & Programs:

Traces of the Trade:
Dane and Constance Perry
Tim Wise
Lani Guinier
Ronald Takaki
Steven Tejada



The ability to acknowledge another person's unique presence and contribution is essential to responsible citizenship and strong leadership. We live in a global society and in a global economy, and more than ever it is crucial for young people to learn how to relate and interact with people from a variety of cultures and backgrounds.

—Treava Milton
Director of Diversity



EMBRACING DIVERSITY



Sometimes we need other people to be our mirrors, to change and broaden the ways in which we see the world. Ultimately, I came to realize this: We experience miracles by interacting with different people, different cultures and by opening ourselves to new experiences.

—Rose
V Former



pride in an advisee program that guides each student with warmth and care.

DINING TOGETHER

At St. Andrew's, meals are a time not only for nourishment but also for companionship. At lunches, and on Wednesday evenings prior to Chapel, everyone gathers together for a family-style meal at which students take turns as waiters. Roughly eight students, mixed by form, sit at tables to dine with faculty and their families. It is a time when we slow the pace of our lives and catch up with each other. At the end of such meals, one of the co-presidents of the student body reads the daily announcements. Our other meals are relaxed, buffet-style meals that feature a variety of hot and cold options, vegetarian and vegan meals and a complete salad and dessert bar.

CAMPUS STEWARDSHIP

The School expects each student to maintain his or her room in an orderly fashion, and corridor faculty inspect rooms each day. We are a community that expects all members to share responsibility for the appearance of our buildings, grounds and common spaces. Every student has a job in a certain area of the School (most are in the student's dorm) each day; each job takes five to ten minutes and all are rotated regularly. In addition, students and faculty gather several times each year for major campus cleaning projects.

HEALTH AND WELLNESS

Our director of health and wellness at St. Andrew's oversees a staff of nurses and school counselors.

Healthcare is available 24 hours a day in the Meg Miller Health Center. The director works in consultation with the School physician, whose office is in Middletown. Our counselors work with students in wellness orientation classes throughout the year, and see students by individual appointment as needed. The School also has a long-standing relationship with a psychologist in Wilmington who visits St. Andrew's for regular appointments at least once each week.

CLUBS AND ACTIVITIES

Opportunities to pursue personal passions are almost unlimited at St. Andrew's. Formal and informal organizations and clubs abound. As interest ebbs and flows, the titles change, but the number of active clubs is usually between 20 and 30. These student and faculty led clubs and activities deepen relationships between members of the community as old and new interests develop.

Students from all forms are welcome to participate in publishing the School newspaper, the Cardinal, and the School literary magazine, the Andean. In addition, the V and VI Form publish the Griffin, our yearbook.

Club activity covers a range of interests and clubs play key roles in many areas of campus life. The Environmental Club organizes the School's recycling program and works with various groups on campus to ensure that St. Andrew's strives to be a sustainable school. Sista Space, the Gay-Straight Alliance and Cultural Exchange bring students together to discuss issues of difference, understanding and acceptance. The Polar Bear Club takes a monthly plunge into Noxontown Pond at 7 a.m. In the Mock Trial Club,



students assume the roles of prosecutors, defense attorneys, witnesses, defendants and plaintiffs in fictitious cases, rehearsing testimony and eventually participating in a statewide competition.

WEEKEND ACTIVITIES

The Student Activities Committee (SAC), which is composed of student leaders from each form and a group of faculty, plans weekend activities for the entire School. SAC plans a wide range of activities on campus. These activities may include dances, film festivals, casino night, knitting or ceramics workshops, cooking classes or parties at faculty homes, coffee houses featuring student music and poetry performances. SAC also organizes events such as international dinners featuring foods prepared in the dining hall by faculty and students from various cultural backgrounds. In addition, SAC may offer a variety of cultural opportunities in nearby cities—professional or college sporting events, plays, concerts, museums, lectures and rallies in Philadelphia, Washington and Baltimore. When the weather is nice, relaxing on the front lawn, the T-dock and on Noxontown Pond is a favorite weekend activity.

TRADITIONS

St. Andrew's has many traditions that reflect and enhance the culture of the School. The opening night square dance, the Frosty Run, "yay days", the Turkey Trot, the 3-on-3 basketball tournament, the Big Jig, and Maui Wowie in the spring are some of the favorite events of the year. In our weekly school meeting students highlight the upcoming special events with skits, videos, poems and clever announcements,

enticing the participation of the full community. We also celebrate birthdays and musical talents shared by students, staff and faculty at these meetings. Our Headmaster adds his thoughts on issues of interest and importance to our community and the world at large, making our weekly meeting an event no one wants to miss out on.

LEADERSHIP

St. Andrew's provides leadership opportunities for students in every aspect of School life. Students grow as leaders by serving on committees for academics, athletics, the arts, residential life and community service. Elected positions are held for both genders in all forms, giving equity and voice to all members of our community. Living with and emulating teachers and peers who demonstrate honesty, discipline, generosity and creativity, our students learn to assume responsibility with grace and integrity. Senior Co-Presidents are elected by their class and lead the school in daily announcements at lunch and at our weekly school meeting, and collaborate with other elected leaders, the faculty, the headmaster and the trustees to create a School culture and tone that is dynamic, responsible and innovative. Each year we graduate young men and women who are well prepared to be leaders in college and in their adult communities.





CHAPEL PROGRAM

Our students come from a wide variety of religious backgrounds. The community includes students of Episcopalian and other Protestant denominations, Catholic, Jewish and Muslim faith, as well as students from no religious tradition at all. We gather twice weekly for services in the A. Felix duPont Memorial Chapel. These moments provide welcome shelter from the whirlwind of daily life, offering time to look inward and to focus on what we have done and left undone. They encourage us to think of loved ones and those in need. Most important of all, they bring to our attention the great, eternal mysteries of life. Following dinner on Wednesday evenings, we come together for evening prayer and to hear a faculty, student or guest speaker; our Sunday morning services follow the Episcopal Church liturgy. Special chapel services throughout the year lend variety to our moments of communal reflection. Among the most popular of these are the first and last services of the year held at nearby historic Old St. Anne's Church, the Christmas Service of Lessons and Carols, St. Francis Day Blessing of the Animals, outdoor Earth Day services and Easter celebrations.

The St. Andrew's Student Vestry is one of the most active groups on campus, maintaining the Chapel, preparing for major festivals and services and serving as sacristans, acolytes, readers, Sunday school teachers and communion assistants in the twice-weekly chapel services. The Vestry also raises money for several projects each year, including St. Mark's School, our sister school in Jane Furse, South Africa, where many St. Andrew's students have gone on to teach for a year during or after college. The Bishop of Delaware is a member of St. Andrew's board of trustees and visits St. Andrew's for services about three times each year. Many students are confirmed in the Episcopal Church and the Roman Catholic Church each year in our Chapel.

St. Andrew's is distinct because of the incredibly high moral values that we hold ourselves to. We are not sat down on our first day and told, 'You will be kind, accepting and honest or else.' We are encouraged to support these ideals for their own sake, and for the betterment of the culture of the School as a whole.

—Andrew
VI Former



When we are in the Chapel and at all other times, we seek to embody authentic Christian qualities of concern for and acceptance of others, compassion, generosity of spirit and empathy. Our community service program rises out of this point of view. We encourage our students to reach out to those in need. In all we do, we try to instill in our students a reverence for humanity and a sense of personal responsibility to use their talents now and throughout their lives to serve others and the world in which we live.

COMMUNITY SERVICE

The Community Service Program at St. Andrew's lies at the center of the School's commitment to encouraging our students to reach out and care for others. We believe strongly that students should develop genuine experiences in service rather than fulfilling a requirement, so all outreach is on a voluntary basis. St. Andrew's identifies numerous opportunities for students to serve on the local, regional and global levels. Tutoring in the local elementary schools, mentoring at the Boys' and Girls' Club, visiting at an elder care facility and serving dinner at a homeless shelter in Wilmington are the most popular off-campus activities. Our students also assist local mentally and physically challenged children in our pool in an adaptive aquatics program and join regional fundraising events in nearby Wilmington and Philadelphia.

Many students make weekly commitments to service projects and participate in special service events such as the AIDS Walk or the Red Cross Blood Drive. Students also pursue service work at home or abroad in cultural exchange service trips during school vacations. Nearly all of our students are involved in some form of community service during the year.



We urge students to be actively involved in community service with the understanding that all members of the community share responsibility for improving the world in which we live.

From our Mission Statement

I thought life was on its way back to normal in New Orleans. I questioned myself on the way, "Why am I going on this trip?" Katrina happened a long time ago. Shouldn't the place be looking pretty good by now? Well, the answer turned out to be, "No."

—Jeong-Hun
V Former



SERVING OTHERS

Monomials

n = 1, 2, 3, ...

9.2 Polynomial Functions

Polynomial function is a sum of functions which are monomials.

This is the formula for the family of polynomial functions:

$$P(x) = a_n x^n + a_{n-1} x^{n-1} + \dots + a_1 x + a_0$$

Here, a_n is the coefficient, x^n is the variable raised to the power n . The highest power of x is called the degree of the polynomial. The highest power of x is called the leading term. The highest power of x is called the leading term. The highest power of x is called the leading term.

Linear (n=1) Quadratic (n=2) Cubic (n=3) Quartic (n=4) Quintic (n=5)

ACADEMICS

Our curriculum teaches students to think logically, critically and creatively, and to articulate their thoughts persuasively; to engage with ideas and worlds beyond their immediate experience through literature, history and the arts; to explore, quantify and analyze physical phenomena using rigorous scientific methods; to achieve increased awareness of their place in a world of diverse philosophical and religious traditions; to develop a firm foundation in computational skills and quantitative analysis; to acquire a global awareness through a knowledge of other cultures and a solid grounding in at least one foreign language; to become aware of ethical and moral issues and make judgments with sensitivity and courage; to use information technology for research, communication and experimentation.

The St. Andrew's academic program rests on a foundation of teaching practices that include small, seminar-style classes, collaborative work and tutorials modeled on the Oxford method. Small class sizes encourage our students to engage themselves fully in intellectual work and to learn from a dynamic exchange of ideas with peers and teachers. Tutorials provide students with the focused questioning and response that allow them to grow as independent readers, writers and thinkers. Students also learn to defend their thoughts and arguments orally in exhibitions, discussions of their work before a panel of students and teachers.

Our full faculty listing and course descriptions are presented in the *Academic Program and Faculty Profile*.

CLASS SIZE

At St. Andrew's the student-teacher ratio is five to one. The average class size is 11 students, the actual size of individual classes depending on the subject and the level at which it is pursued.

DIPLOMA REQUIREMENTS

The School requires the following yearlong course credits for graduation: four credits in English; four credits in mathematics; two credits in history, including one in United States history; three credits in a laboratory science; two credits or through the third level, whichever is more advanced, of the same classical or modern language (at least three consecutive year credits is strongly recommended). Students must also take a half-credit course in Health and Wellness in the IV Form year, religious studies courses in the IV and VI Forms, and must participate in a curricular or co-curricular aspect of the arts program before graduation.

The minimum course load for the various forms within the School is as follows:

- III Form: five one-credit courses + Introduction to the Arts
- IV Form: five one-credit courses, including History and Literature of Old and New Testaments + Health and Wellness

I believe that the
strength of the
academic program
is the faculty.

The teachers at
St. Andrew's never
give up on you, but
continue to push you
further to find success
and not settle.

— Peter
VI Former



The material we study in Global Studies is extremely relevant, and I have come out of the class much more aware of my presence in the world. When Paul Farmer came to St Andrew's, I knew about the world he spoke of, and I felt I could ask him intelligent questions about it.

—Esi
VI Former

- V Form: five one-credit courses
- VI Form: four one-credit courses + Introduction to Philosophy / Religious Studies elective

Petitions for exceptions to the above requirements may be made to the Academic Committee.

EXAMINATIONS AND ASSESSMENTS

Students take examinations in their courses at the end of the first and second semesters. In addition, they take such standardized tests as the School requires to facilitate college guidance and placement. All IV Form students take the College Board PSAT, and all V Form students take the National Merit Scholarship Qualifying Test. In their V and VI Form years, students take the College Board SAT I and at least two SAT IIs. Students may take Advanced Placement examinations in various subjects. Some Advanced Study courses will prepare for these tests, but in most cases students will have to prepare some topics outside of general class instruction.

St. Andrew's is also the leading independent school in the country in the use of the College and Work Readiness Assessment (CWRA), an innovative written exam that eschews a traditional multiple-choice format. Developed by the Council for Aid to Education, this exam, a version of which is used at over 200 colleges and universities across the country, helps schools measure the quality of their instruction in writing, problem-solving, analysis and calculation; it assesses students' readiness to think critically, adjudicate between competing hypotheses, and present their conclusions in a clear and compelling way—skills crucial to college, work and civic life and prominent in a St. Andrew's education. Students take this exam within the first month of school and near the end of their VI Form year.

REPORTS AND GRADING

The School reports grades in percentages: 85 or above represents honors work, 60 is passing, and below 60, failing. The School sends reports home in November, February and April. In October and March, each student's advisor writes a letter noting the student's mid-term performance. In June, the student's advisor writes a complete review that accompanies final grades and teacher comments. The Academic Dean, Director of Studies and academic advisors may also write letters in special instances.

TECHNOLOGICAL RESOURCES

The Academic Program makes effective use of modern information technology in all subject areas. The nearly 100 networked computers located in classrooms and laboratories across campus provide students and faculty with Internet access, e-mail accounts, internal campus messaging, file storage, printing services and specialized academic software.

Science laboratories utilize computer-interfaced measuring probes and spreadsheet programs for data analysis. In mathematics classes, students work with mathematical modeling and statistical analysis programs, as well as programmable graphing calculators. Students hone their listening and speaking skills in modern languages by working with interactive audio and video clips accessible through the campus computer network.

LIBRARY

The mission of the Irene duPont Library is to encourage academic excellence by providing service and instruction to the School community, to collaborate with faculty in designing learning opportunities with resources, information and technology, and to promote effective and discriminating users of ideas and information.

Built in October 1956 and renovated in 2008, the Library features ten individual study carrels, a computer lab, five group study rooms, a periodical and reference room, and a collection of approximately 35,000 volumes and 125 periodicals. The print collection grows by about 700 books each year. Additionally, the Library has over 30 electronic reference sources and full-text article databases covering a wide variety of subject areas. The Library also loans cameras, iPods, video cameras, Kindles, iPads and videos (2000 fiction and nonfiction) for student and faculty use. In an attempt to reach out to patrons on campus and beyond, the Library maintains a presence on Facebook and Twitter to inform students, faculty and alumni on topics such as plagiarism, information literacy, research and the School archives. While the Library strives to provide the best technology and access to information in a secondary school setting, the Library itself remains a serene, casual and academic study environment.

With a new and ever-expanding library Website, <http://libraryweb.standrews-de.org>, the Library facilitates student access to information and provides formal library instruction. This work, begun during orientation classes for new students and continuing in other academic classes throughout a St. Andrew's career, affords students the library research skills for the academic environment of this school and beyond. The library Web page is also an access point for the School archives, which offer numerous primary research opportunities for students, faculty, and alumni. The Web site also provides access to numerous class syllabi (Course Guides), a compilation that allows for greater collaboration within the community and enables the librarians to support the curriculum and intellectual growth of our students, faculty and staff.

ENGAGING THE MIND

To exist in a community as vibrant and alive as St. Andrew's is a remarkable and rare opportunity. We have been privileged to hear world-renowned professors and authors speak, to travel across the country and world to learn about different cultures and problems first-hand, and to engage in a multitude of conversations that range from multiculturalism to blood diamonds. Ultimately, St. Andrew's provides students with an education that introduces them to the world's problems and concerns that real adults face in every day life in the most authentic and intensive learning environment.

—Brandon
VI Former



Headmasters Forums

Students and faculty meet weekly to discuss and debate topics of local, national and international interest. Recent topics have included:

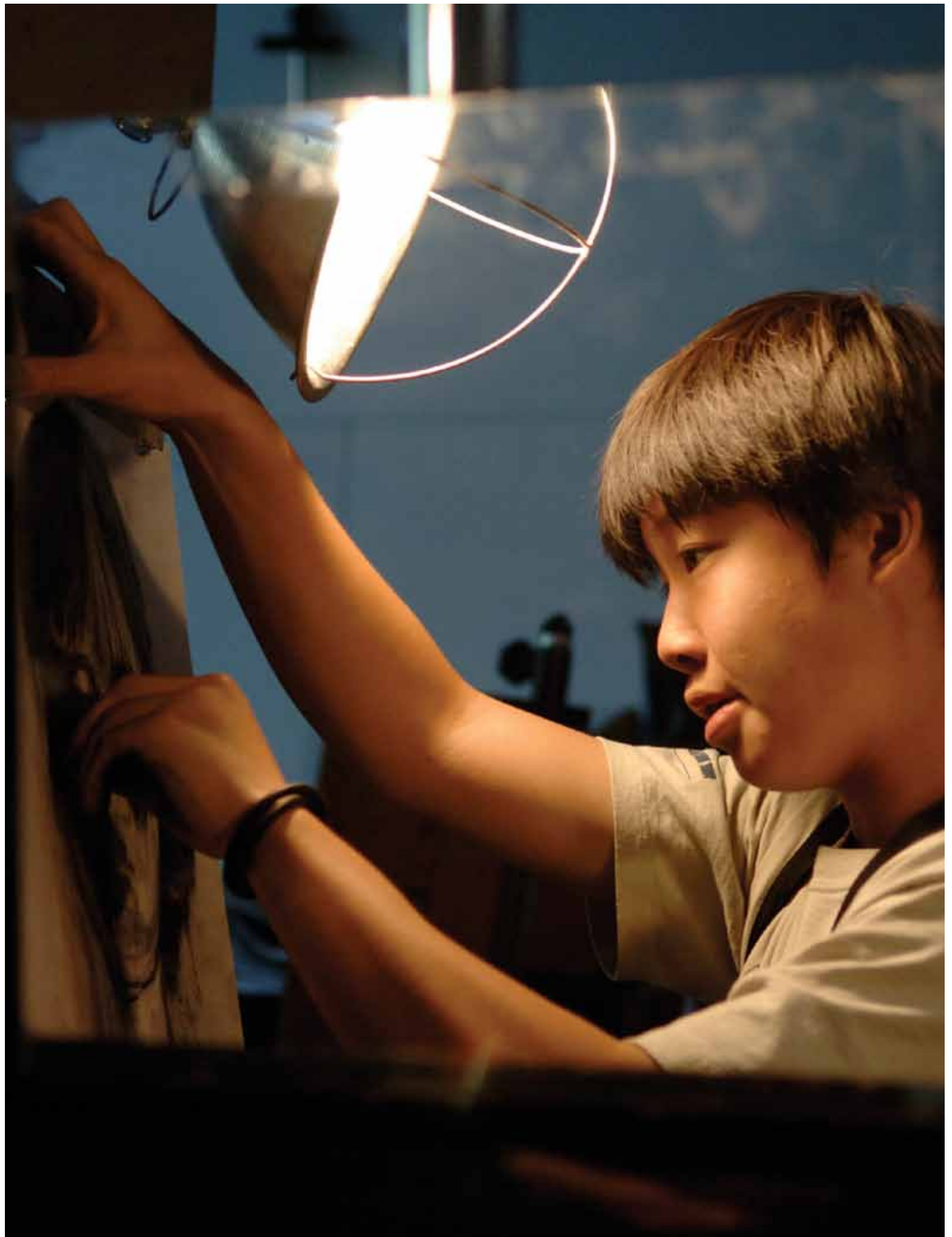
- the 2008 presidential nominees and election
- Supreme Court nominees
- the wars in Iraq and Afghanistan
- ethnic and gender stereotypes in American culture
- intelligent design vs. evolution
- Middletown's growth, suburbanization, new roadways, possibilities of solar energy and preservation of open space

Academic Lectures

The School's endowment provides for enlightened explorations of important topics that extend beyond the confines of the small classroom. We welcome experts and provocative thinkers to lead discussions and share insights and experiences on a range of compelling subjects. Recent speakers have included:

- Ilan Berman, Vice President, American Foreign Policy Council
- Brian Cox, particle physicist, University of Manchester (UK) on the Large Hadron Collider
- Paul Farmer, professor, Harvard University; founder, Partners in Health, on international health and social justice issues
- Steve Forbes, entrepreneur, author, and former presidential candidate, on global economic issues
- Joanne Freeman, professor, Yale University on national politics in the early American republic
- Lee Hamilton, vice chairman, 9/11 Commission, former Representative of Indiana
- Russell Hulse, Nobel Laureate in Physics, on binary pulsars
- Fred Kleiner, professor and chair of Art History, Boston University, on classical art and civilization
- Sr. Helen Prejean, activist and author, *Dead Man Walking*, on capital punishment
- Maria Spiropulu, experimental physicist, European Organization for Nuclear Research (Geneva) on string theory
- Mike Tidwell, founder and director, Chesapeake Climate Action Network; author, *Bayou Farewell*, on local environmental issues







THE ARTS

The visual and performing arts are a vital aspect of a St. Andrew's education as well as our campus culture. The O'Brien Arts Center, built in 2004, is a testimony to our commitment to and passion for all facets of the arts at St. Andrew's.

Starting in the III Form year, all students take part in Introduction to the Arts, a survey course giving them the opportunity to get to know all members of the arts faculty and a chance to be inspired by each discipline represented within the Visual and Performing Arts Department.

Following this survey course, all students at St. Andrew's are encouraged to explore and develop their artistic talent in a number of different areas; not only does this foster creativity and skills of expression, but it also develops the focus and discipline that will serve them well in all aspects of their lives. We offer students the opportunity to study ceramics, drawing, painting, art history, film studies, photography, acting, music history, theory and composition and digital music. These courses are described in the Academic Program and Faculty Profile.

Frequent recitals, exhibitions and drama productions allow students to share their artistic talents and efforts with the entire St. Andrew's community. Such sharing takes place on a greater stage as well. Our music groups have performed throughout Delaware and the region, including at the White House. Our Choral Scholars bring their music to a number of churches and concert halls throughout the mid-Atlantic region, and every other year to cathedrals and villages in Europe. At the same time, we bring the larger art world to St. Andrew's through regular exhibitions of



My favorite place on campus is the Arts Center. In this building the tensions from my day evaporate.

In the art building I enter a different world which is separate from the classroom world. I can let loose. Whether painting, drawing, dancing or playing an instrument,

I feel happy and satisfied. The Arts Center is unique because it is a place where I can express myself and use my heart as well as my brain. It is always open to everyone, whether you paint for a class or just for yourself.

—Tyler
VI Former

the work of professional artists in the Warner Gallery, concerts by internationally recognized musicians and ensembles in Engelhard Hall and lectures by art historians.

The O'Brien Arts Center accommodates all these programs beautifully, with the 380-seat Engelhard Hall and state-of-the-art, acoustically engineered rehearsal rooms for orchestra and small instrumental and vocal ensembles. The Arts Center provides bright and spacious painting and drawing studios, as well as the Warner Gallery, a breathtaking art gallery to exhibit student works and those of visiting artists. Students have access to ample and well-equipped labs for ceramics, dance, pottery, film, photography and graphic design.

In Founders Hall, the Forbes Theater offers student actors a superb, technologically sophisticated space in which to grow as performers and learn the artistic and technical aspects of dramatic production. A classical or contemporary play is performed in the fall and spring, one-act plays and a major musical with a live pit orchestra are produced each winter. Recent productions include *The Laramie Project*, *The Crucible*, *Shadow Hour*, *Oliver!*, *Annie Get Your Gun*, *The Boyfriend* and *Much Ado About Nothing*.

In the spring, Arts Weekend is the culmination of the year's artistic accomplishments. Parents and friends visit the campus to witness and celebrate the brilliance and energy of our students. The campus explodes with a diversity of exhibits and events—drawings, paintings, sculptures, photography, film presentations, orchestra and jazz concerts, bagpipes and drum parades, choral and a cappella performances, dramatic productions, and musical and dance recitals by individual students.



CREATIVE VOICES

The unique part about the arts at St. Andrew's is that when you enter a performance there is such an overwhelming sense of support that one would imagine you were at a sporting event.

—Emily
V Form



Unique Opportunities:

- Noxontones
- Pipes and Drums
- Choral Scholars
- Salsa Dancing
- International Film Festival
- Open Mic Night
- Coffee Houses
- Poetry Slams

ATHLETICS

Our program strives to cultivate teamwork, sportsmanship, poise, self-discipline and resilience. We believe that the competitive and collaborative atmosphere of team sports is an essential parts of a liberal arts tradition, and that all students—not only varsity athletes—benefit from participation in sports. Our coaches reflect our belief in the teacher-coach model. These men and women bring the same heart and energy to the field that they exhibit in the classroom and on the dorm and in their roles as teachers and advisors.

We stress participation, growth and a commitment to excellence at every level. There are as many levels of competition as can be supported by numbers of athletes; all sports field varsity and junior varsity teams, and some a third level. Athletics at St. Andrew's are interscholastic, with 10 sports for girls and 11 for boys. Most students begin their careers on lower-level teams and work their way up to varsity.

St. Andrew's is a member of the Delaware Independent Schools Conference, which has league championships in all sports we offer except crew and squash. The five other conference schools—Sanford, Tatnall, Tower Hill, Westtown and Wilmington Friends—have athletic philosophies similar to ours and are located within an hour of St. Andrew's. Most games are played against teams from DISC schools, with additional contests held with teams from other independent schools and some public schools. St. Andrew's is also an associate member of the Delaware Interscholastic Athletic Association (DIAA), which governs athletic policies in Delaware.

Across all sports, St. Andrew's is competitive in league and state competition, having won state championships in boys' cross-country, girls' and boys' lacrosse, boys' soccer, girls' and boys' tennis and wrestling. Girls' and boys' crew have received regional, national and international recognition. The boys' crew has competed at the British Henley regattas several times in the last 10 years. The girls' crew has won the Stotesbury Regatta, the oldest and largest American high school regatta, more than







any other team in the country and has been to the Henley Women's Regatta four times, making the final three times and winning in 1997.

On six occasions, five St. Andrew's coaches have been named Delaware Coach of the Year in baseball, girls' and boys' tennis, boys' lacrosse and swimming. In 2004, Coach Bob Colburn and the St. Andrew's baseball team were honored for a decade of exemplary sportsmanship. In addition, statewide sportsmanship honors have been awarded on six occasions to our field hockey, boys' soccer, baseball and boys' tennis teams.

ATHLETIC FACILITIES

The Athletic Program is served by superb outdoor and indoor facilities that are accessible to the entire St. Andrew's community. Outdoor facilities for fall sports include five soccer fields, two field hockey fields, practice and game football fields and a five-kilometer cross-country course. There are two volleyball courts in the gym that are used for fall competition.

Winter sports are served by a state-of-the-art six-lane swimming pool in the Genereaux Aquatic Center; five regulation international squash courts, two basketball courts, wrestling rooms, a weight-training room, a cardiovascular fitness room and locker room space for home and visiting teams. St. Andrew's training room is available to all athletes and is managed by a certified trainer who resides on campus and is an essential part of our athletic program, helping athletes focus on the habits of health and well-being that will help them excel as athletes and scholars.

Outdoor facilities for spring-term athletics include two baseball diamonds, four lacrosse fields, 14 tennis courts, and the Kip duPont Boathouse, which houses 20 shells and provides easy access to the 1,500-meter, six-lane crew course on Noxontown Pond. The pond is also used for recreational sailing, canoeing, kayaking and swimming.

All students participate in afternoon activities. While 90% of our students play a sport, students may also choose to be part of a major dramatic production or community service project.





COMPETITIVE DRIVE

In most of our sports we compete against much bigger schools with specialized athletes, and yet, largely because of our coaches and the mentality of our athletes, we are able to compete with the best in the state.

—Tyler
V Form



Sports Offerings:

Fall Cross-Country
Field Hockey
Football
Soccer
Volleyball

Winter Basketball
Squash
Swimming
Wrestling

Spring Baseball
Crew
Lacrosse
Tennis

COLLEGE COUNSELING

The principal goal of the college counseling program is to empower our students to have successful and fulfilling careers in a college appropriate to their individual strengths and interests. Toward this end, we help our students think deeply and carefully about their talents and aspirations, set reasonable and appropriate goals and present themselves in a manner that will maximize their strengths.

We encourage our incoming students to find and develop those strengths by sampling a wide range of academic and co-curricular opportunities. We have consistently found that the students best served by the college counseling program are those who have committed themselves most meaningfully to the life of the School. In addition, we urge students to develop a good sense of what kind of college environment will best suit them.

Students and parents come into the process with many different hopes, concerns and expectations. We pride ourselves on communicating clearly and promptly with families, giving them the information they need to support their children with confidence and wisdom. In the rapidly changing world of college admissions, we keep ourselves up to date and pass this current understanding on to all with whom we work.

The headmaster, the director of college counseling and two college counselors also act as strong advocates for individual students and the School as a whole. We visit colleges and universities throughout the year to keep our understanding of the colleges fresh and to maintain the colleges' familiarity with the unique strengths and character of St. Andrew's. A small group of admission officers from a variety of colleges is invited each year to our "Experience St. Andrew's Program" which provides college officers the opportunity to spend a day attending our classes and to meet in small groups with students and faculty to become more familiar with the culture and curriculum of St. Andrew's.

College counselors also guide students in using the Internet and other resources to gain information about colleges, scholarships and financial aid, and SAT, AP and ACT testing. In the V Form year, students confer frequently with college counselors, both individually and in group sessions. As VI Formers, the students take primary responsibility for their application process, while we continue to support them with advice, advocacy and logistical support.

Our four-year college matriculation list is included in the *Academic Program and Faculty Profile*.





ADMISSION & FINANCIAL AID

The admission process is designed to acquaint prospective families with as much of the school as possible. In turn, we hope to learn as much as we can about you; your academic interests, talents, hobbies, aspirations, as well as your interest in St. Andrew's.

We value our distinctive school and seek students of good character who will contribute to our vibrant community. Bright, motivated students who are ready to immerse themselves into all aspects of school life are encouraged to apply. Need-based financial aid is available to all admitted students who qualify through a separate, confidential, financial aid application process. If you think you are interested in our School and a good match for our academic and student life programs, you should apply for admission regardless of your ability to pay full tuition. Please see our brochure *Tuition and Financial Aid* for more detailed information about our need-blind admission and financial aid process.

We look forward to getting to know you and welcoming you to our campus. As we go through the process together, we hope to discover that you and St. Andrew's are a great match.

STEPS TO TAKE TO APPLY

1. Come visit us! A campus visit includes a tour with a student and an interview with a member of the admission committee. Please call to schedule a visit; we see prospective families on weekdays and on Saturday mornings when classes are in session.
2. Submit your application by January 15; supporting documents by January 31. Application materials are available in the accompanying folder and available for downloading on the School Web site.
3. Take the SSAT in November, December or January. Our School code is 6280. International students for whom English is a second language should take both the SSAT and the TOEFL. Our school TOEFL code is 8146.
4. Visit our School Web site regularly for updated school news and photos and detailed program information.

Completed files are reviewed throughout January and February and admission decisions are mailed on March 10. Applications received after our due dates will be reviewed on a space available basis. Please contact us if we can be of any help in either the admission or financial aid process.

ADMISSION OFFICE ♦ 302-285-4231 ♦ ADMISSIONS@STANDREWS-DE.ORG



I hadn't planned on going to boarding school, but when I saw the interactions between faculty and students, which were so immediately apparent, I decided that this was the place where I wanted to go to high school.

—Katherine
VI Former



DIRECTIONS & ACCOMMODATIONS

DIRECTIONS TO OUR SCHOOL

Warning! Web sites such as Yahoo! Maps or MapQuest do not provide accurate directions. Please follow the directions given below or call the Admission Office for assistance.

From Philadelphia and the North:

Take I-95 South into Delaware. If you are coming from New York City, you will enter Delaware going over the I-295 Delaware Memorial Bridge. Continue on I-95 South towards Baltimore. Exit at 4-A (sign to Christiana Mall) and follow signs to Route 1 South. Stay on Route 1 going over the bridge with the yellow arches and continue through the tollbooth (\$1.00). Remain on Route 1 South until Route 299 (Middletown/Odessa Exit). Take a right onto Route 299 towards Middletown. At the third light, turn left onto Silver Lake Road. Proceed until it ends at Noxontown Road. Cross Noxontown Road and enter through the stone pillars. Park in the circle in front of Founders Hall.

From Washington, DC:

Go east on Route 50 over the Bay Bridge until it intersects with Route 301. (Middletown is approximately 1 hour from the Bay Bridge.) Continue on 301 North into Delaware. One half mile past 301 Hess Truck Stop you will come to a traffic light with a Wawa and a Lowes on the right; turn right at the light onto Route 299 East. Continue on 299 through the center of Middletown. At the fourth light take a right onto Silver Lake Road. Proceed until it ends at Noxontown Road. Cross Noxontown Road and enter through the stone pillars. Park in the circle in front of Founders Hall.

From Baltimore and the South:

Take I-95 North to Delaware state line. About 1 mile after tollbooth, exit onto Route 896 South; continue on Route 896 for 10 miles to a traffic light where the road becomes Route 301/71. (Do not turn left where sign points 896 to Route 13.) Continue through the traffic light for 3 miles to the second light. Immediately after Dunkin Donuts bear to the left. Go left across railroad tracks until you reach the third traffic light in the center of town. Turn left onto Main Street, Route 299 East. At the third light take a right onto Silver Lake Road. Proceed until it ends at Noxontown Road. Cross Noxontown Road and enter through the stone pillars. Park in the circle in front of Founders Hall.

ACCOMMODATIONS

5 Minutes Away—Odessa and Townsend, DE

Carol Coleman's B & B, Odessa, 302-378-4179
Hampton Inn, Middletown, 302-378-5656

25 Minutes Away—Chesapeake City, MD

Inn at the Canal, 410-885-5995
Blue Max Inn, 410-885-2781
Bohemia House B & B, 410-885-3024

30 Minutes Away—Christiana, DE (Exit 4B off I-95)

Fairfield Inn (Marriott), 302-292-1500
Christiana Hilton Inn, 302-454-1500
Comfort Inn, 302-368-8715
Marriott Courtyard, 302-456-3800

30 Minutes Away—Dover, DE

Comfort Inn, 302-674-3300
Hampton Inn, 800-426-7866
Holiday Inn, 302-734-5701
Sheraton Inn, 302-678-8500
Super Lodge, 302-678-0160
Little Creek Inn Bed & Breakfast, 888-804-1300

35 Minutes Away—Wilmington, DE

Hotel duPont, 302-594-3100
Sheraton Suites, 302-654-8300
Hilton Wilmington/Christiana, 302-454-1500

TRANSPORTATION

Philadelphia International Airport (PHL)

60 minutes away - www.phl.org
Delaware Express: 1-800-648-5466
Car Rentals: Budget, 1-800-527-0700
Dollar, 1-800-800-4000
Hertz, 1-800-654-3131
National, 1-800-227-7368

Baltimore Washington International Airport (BWI)

90 minutes away—www.bwiairport.com
Car Rentals: Dollar, 1-800-800-4000
Enterprise, 1-800-325-8007
Hertz, 410-850-7400
National, 410-859-8860

Wilmington Train Station- AMTRAK

Wilmington Bus Terminal (across from AMTRAK)

30 minutes away—

Amtrak: www.amtrak.com
1-800-437-3417

Greyhound: www.greyhound.com
1-800-229-9424

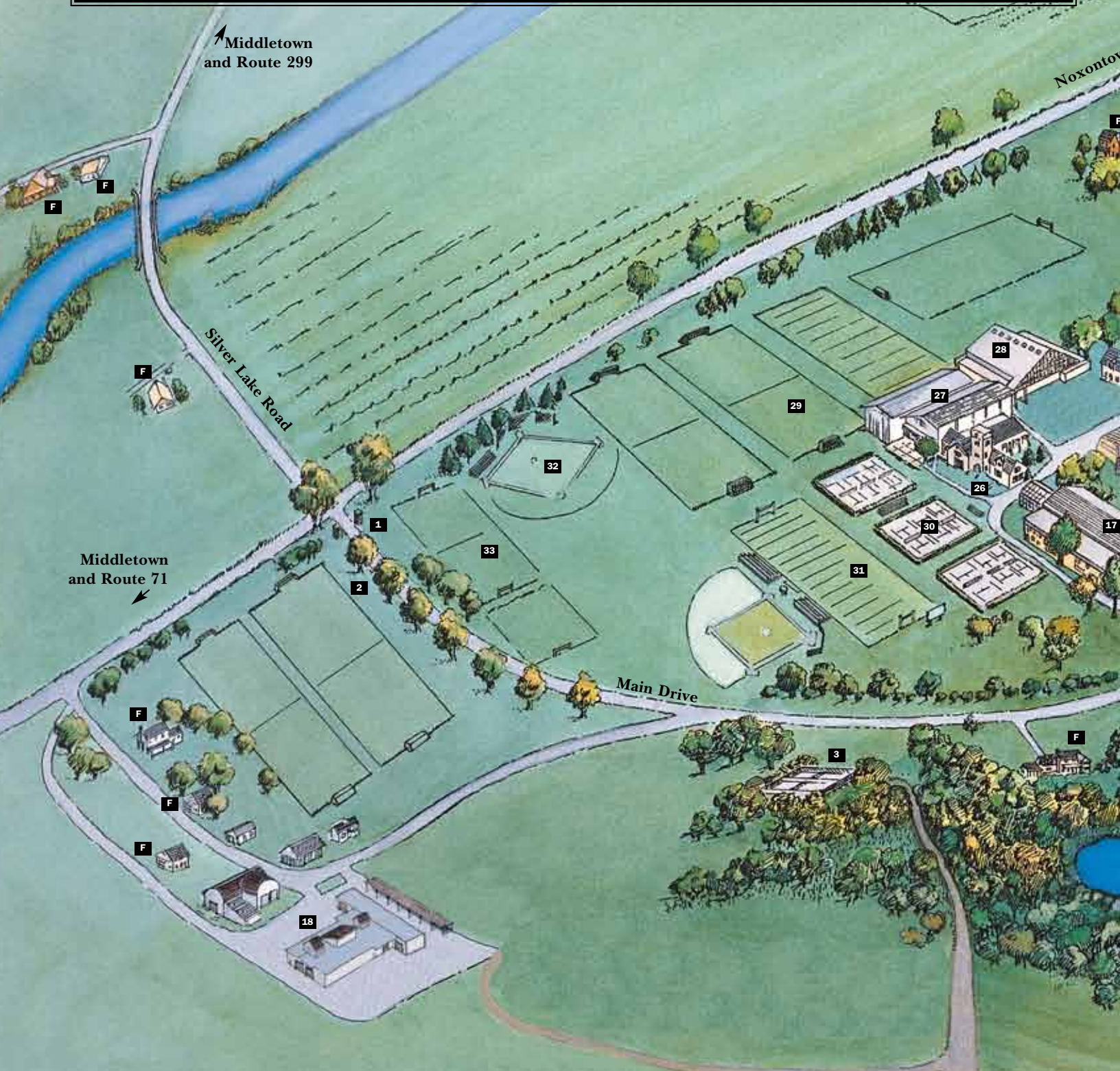
Car Rentals: Hertz, 1-800-654-3131
Budget, 1-800-527-0700

We do not recommend using a taxi service—the costs can reach \$90-100 each way.



ST. ANDREW'S SCHOOL

MIDDLETOWN, DELAWARE





wn Road

Noxontown Road
Route 13

Washburn
Cove

Noxontown Pond

Pell Cove

CAMPUS MAP DIRECTORY

1 Main Entrance to Campus

Founders Hall

4 College Counseling, Registrar
(ground floor)
Reception, Headmaster,
Admission (1st floor)
Hillier Corridor (2nd floor)

5 School Store, Computer Lab
(ground floor)
Business Office (1st floor)
Hillier and Fleming Corridors
(2nd floor)

6 Main Common Room,
Dining Hall (1st floor)
Sherwood Corridor
(2nd floor)
Schmolze Corridor (3rd floor)

7 A. Felix duPont Jr. Chapel
(ground floor)
Classical Languages, History,
Religious Studies (1st floor)
Sherwood Corridor
(2nd floor)
Schmolze Corridor (3rd floor)

8 Forbes Theater (ground floor)
Modern Languages, Language
Lab, Computer Lab (1st floor)
Baum Corridor (2nd floor)
Voorhees Corridor (3rd floor)

9 Irene duPont Library

Other Facilities

11 Pell Hall

12 Moss Hall

13 Moss Annex

14 Trapnell Alumni House

16 Edith Pell Student Center

17 Amos Hall:
English, Computer Lab, Science
Labs, Amos Lecture Hall (1st
floor)
Science Labs, Math (2nd floor)

18 Facilities Services Building:
Campus Plant Offices
Security
Woodshop
Transportation

19 Miller Health Center

20 Child Care Center

22 Mein Hall

23 Gaul East

24 Gaul West

25 O'Brien Arts Center:
Engelhard Performance Hall
Warner Art Gallery
Painting, Ceramics, Film,
Photography Studios
Music Rehearsal Rooms
Tawes Music Library

Residences

F Faculty Houses

H Headmaster's House

Sports Facilities

2 Cross-Country Starting Line

3 Paddle Tennis Courts

10 T-Dock

15 Kip duPont Boat House

21 Rodney Point Pavilion and Docks

26 Old Gymnasium:
Fitness Center, Trainer's
Office, Squash Courts,
Wrestling Rooms

27 New Gymnasium:
Basketball Courts, Locker Rooms

28 Genereaux Aquatic Center

29 Varsity Soccer and Lacrosse
Fields

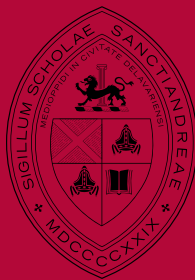
30 Tennis Courts

31 Varsity Football and Lacrosse
Fields

32 Varsity Baseball Field
(Colburn Field)

33 Varsity Field Hockey Field





St. Andrew's School
350 Noxontown Road
Middletown, Delaware 19709-1605
(302) 285-4231
www.standrews-de.org